

GLASSO

INSPECTING EVERYTHING IN GLASS

ABOUT GRIDBOTS

We are a Technology company from India and work in the field of Robotics - Artificial Intelligence and Machine Vision. Founded in August 2007 by young and passionate innovator Mr. Pulkit Gaur [TED Fellow and MIT Young Innovator of the year]. We today are a team of more than 50 people- Head quartered in Ahmedabad and having offices in Pune and Delhi.

We design and develop ultra high performance systems which are used in the industry for defect detection - dimension measurement - sorting applications - grading application and many other ways. With our machine vision and robotic solutions we are helping our clients achieve digital factory goals in a time bound manner.

We would be glad to hear about your industry 4.0 adaptation strategy and would love to get in touch with you to explore the synergies in working together !

NO.1

Market Share In Solar Glass Inspection in India

12+

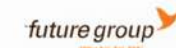
Glass Projects Completed

10+

Research Team

200+

Components Used per Machine



GLOBAL PRESENCE



- 01** ROBOTRIK SYSTEMS.
CANADA
- 02** DIGITAL OCEANIC.
SF
- 03** DAIT COMPANY.
RUSSIA
- 04** ATM.
DAMMAN
- 05** ZARP LABS.
INDIA
- 06** SIGNET SYSTEMS.
AUSTRALIA
- 07** ENCODE SYSTEMS.
SINGAPORE

GLASSO FLOATSCAN

MOST ACCURATE FLOAT GLASS
INSPECTION SYSTEM



THE INDUSTRY STANDARD FOR
FLOAT GLASS INSPECTION



Gridbots Glasso - FloatSCAN is a state of art inspection system for the float glass ribbons and sheets of any width and running at a speed of upto 36 Meters/Minute. The system can detect the various types of defects found in the float glass like blisters, stones, scratches, inclusions and knots.

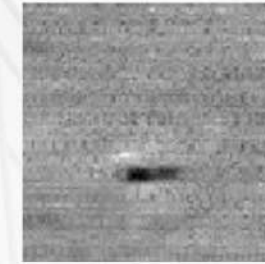
The system can interface with any existing glass line and can provide data to the cut optimisers.

The principle of detection of defects is based on multiple reflection, refraction and transmission pictures captured during the glass pass through and then analysed with ultra high speed algorithms which can utilise the prior knowledge of data and patterns to detect and classify the defects in the glass ribbons.

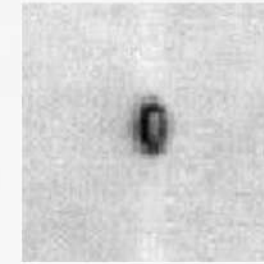
The system comprises of 10 or more area scan cameras which are directly connected to individual processing units for minimal delays.

GLASS INSPECTION SYSTEM

IDENTIFIED GLASS DEFECTS



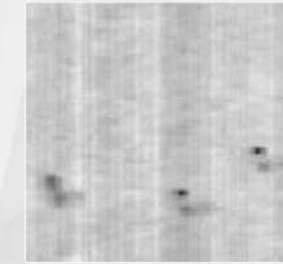
BUBBLE



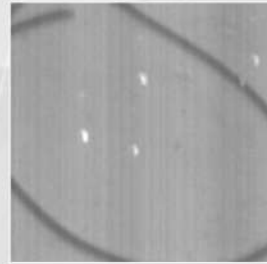
BIG BUBBLE



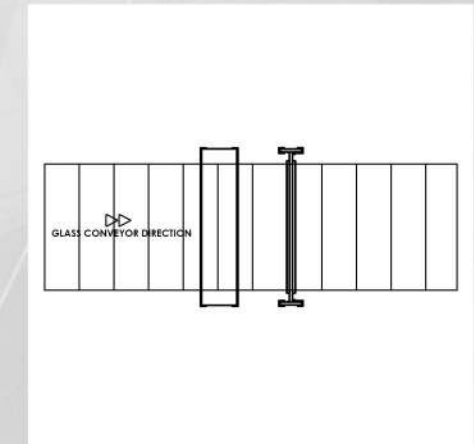
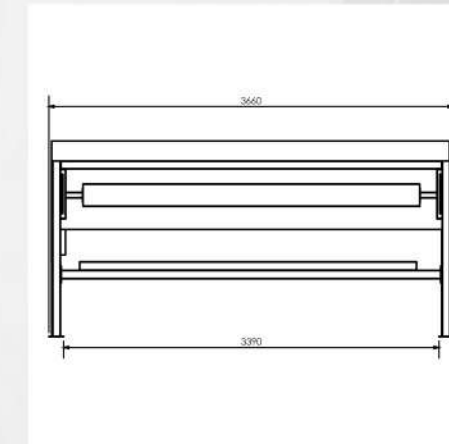
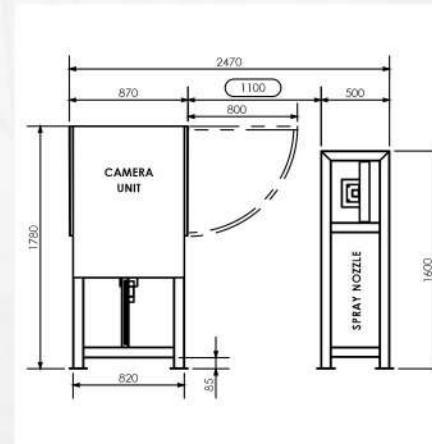
SALT



TIN DROP



DEBRIS



SPECIFICATIONS

| | |
|---|---|
| Defect Detection Capability | 20 Micron upwards |
| System Capabilities (For various defects) | Open and Closed Blister, Stones, Spots, Chips, Knots, Scratches, Inclusions and Other defects |
| Defect Detection rate | Higher than 98% |
| Defects Classification System | Deep learning based defects classifiers |
| System GUI | Multilevel GUI (For Various User Types, Intuitive, Multi Language Support) |
| Compute Architecture | Nvidia 3080 based Compute Systems with Intel i9-11 th Gen Processors |
| System Control | Independent parallel computing system for failsafe and Hot Swap |
| Illumination | Multi spectral LED Lighting- Upto Million Lumens Light Intensity (Controllable) |
| Cutting Line Integration | Grenzbach / Lisecc / Bottero / Millennium |
| Realtime Defect Marking | Real time defects marking system with washable ink |
| Operating Environment | Non Clean Room - 0-60 Degrees - Non-Condensing |
| IOT Architecture | Remote login & Maintenance, Wifi Enabled, Cloud Based Analytics |

THE KEY TO SUCCESS AND HIGHEST PRODUCTIVITY



GRIDBOTS TECHNOLOGIES PVT. LTD.

Main Office Address

Office #306, Maharana Pratap Complex,
Behind V.S. Hospital, Ashram Road,
Ahmedabad - 380006, Gujarat, India.

Factory Address

59, MahaGujarat Industrial Estate,
Behind Surbhi Dining Hall, Sarkhej Bavla Road,
Moraiya, Ahmedabad - 382213, Gujarat, India.

Contact

M. : +919924826584

Email Id : contact@gridbots.com

Website : www.gridbots.com

